



Mouse anti Insulin Receptor (IR) Monoclonal Antibody

Alternative Name(s): Insulin receptor; CD220; IR

Order Information

- **Description:** Insulin Receptor (IR)
- **Catalogue:** 500-5844
- **Lot:** See label
- **Size:** 100ug/200ul
- **Host:** Mouse
- **Clone:** ABM258
- **Application:** IHC(P), WB
- **Reactivity:** Hu

ANTIGEN PREPARATION

Highly purified human placental Insulin Receptor.

BACKGROUND

The human insulin receptor is a heterotetrametric membrane glycoprotein consisting of disulfide-linked subunits in a β - α - α - β Configuration. The beta-subunit (95kDa) possesses a single transmembrane domain, whereas the alpha subunit (135kDa) is completely extracellular.

PURIFICATION

The mouse IgG is purified by Protein A-Affinity Chromatography according to Isotyping

FORMULATION

This affinity purified antibody is supplied in sterile Phosphatebuffered saline (pH7.2) containing antibody stabilizer

SPECIFICITY

This antibody recognizes human Insulin Receptor protein. The other species was not tested.

STORAGE

The antibodies are stable for 24 months from date of receipt when stored at -20°C to -70°C . The antibodies can be stored at 2°C - 8°C for three month without detectable loss of activity. Avoid repeated freezing-thawing cycles.

APPLICATIONS/SUGGESTED WORKING DILUTIONS*

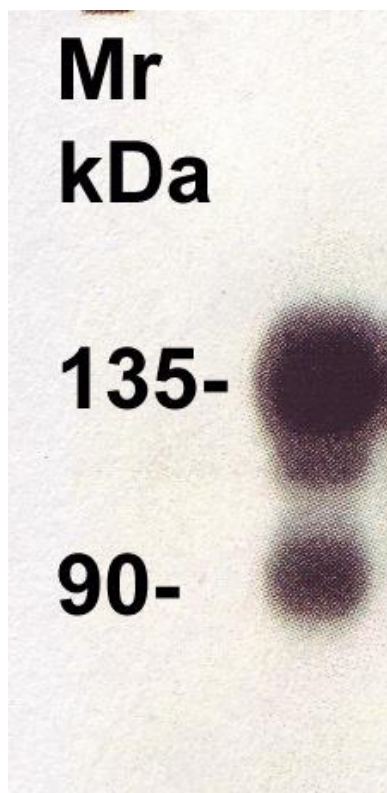
- Western Blot: 0.1-1 $\mu\text{g/ml}$
- ELISA: 0.01-0.1 $\mu\text{g/ml}$
- Immunoprecipitation: 2-5 $\mu\text{g/ml}$
- IHC: 2-10 $\mu\text{g/ml}$
- Flow cytometry: Not tested
- Molecular Weight: 135.0
- Positive Control: Kidney Tissue
- Cellular Location: Cell Membrane

*Optimal dilutions should be determined by researchers for the specific applications.

FOR RESEARCH USE ONLY.

AbboMax, Inc 2528 Qume Drive, Suite 8, San Jose, California 95131, USA
1 408-573-1898 (Tel). 1 408-573-1858 (Fax). www.abbomax.com info@abbomax.com

DATA ATTACHMENTS



Western Blot: The cell lysate derived from Human IM-9 lymphocytes (5 mg/ml) was immunoprecipitated by Mouse anti IR-1 (Cat# 500-5844) at 10 µg/ml. A major band around ~135 kDa is observed.

REFERENCES

FOR RESEARCH USE ONLY.

AbboMax, Inc 2528 Qume Drive, Suite 8, San Jose, California 95131, USA
1 408-573-1898 (Tel). 1 408-573-1858 (Fax). www.abbomax.com info@abbomax.com